

ASSISTED LIVING



From local NHS Trust to 5 Star private living accommodation for the elderly, this has provided us with great expertise in this growing specialist market. We have successfully delivered in excess of £44,000,000 of Assisted Living projects in the South of England and we have continued to build and indeed advance our extensive knowledge of Assisted Living standards, expectations and requirements



SIGNATURE / SUNRISE LIVING
7no Properties Total Value: £7,150,000



SIGNATURE / SUNRISE LIVING

Typically a two storey assisted living care home, incorporating approximately 80 to 90 resident bedrooms with staff welfare, bistro, parlour, kitchen and lounge areas

Although our responsibility was for the mechanical services, we also took on the responsibility as lead co-ordinators incorporating electrical and fire alarm installations into the drawing design

Effectively a large residential property, our installation included residents bathroom ventilation, all domestic services to bathrooms and residents kitchenettes, commercial kitchen ventilation and domestics. In addition to the above, the installation of a two pipe reverse return radiator heating circuit and various air conditioning units to back of house areas were provided

Packaged plantrooms were installed together with centralised ventilation plant

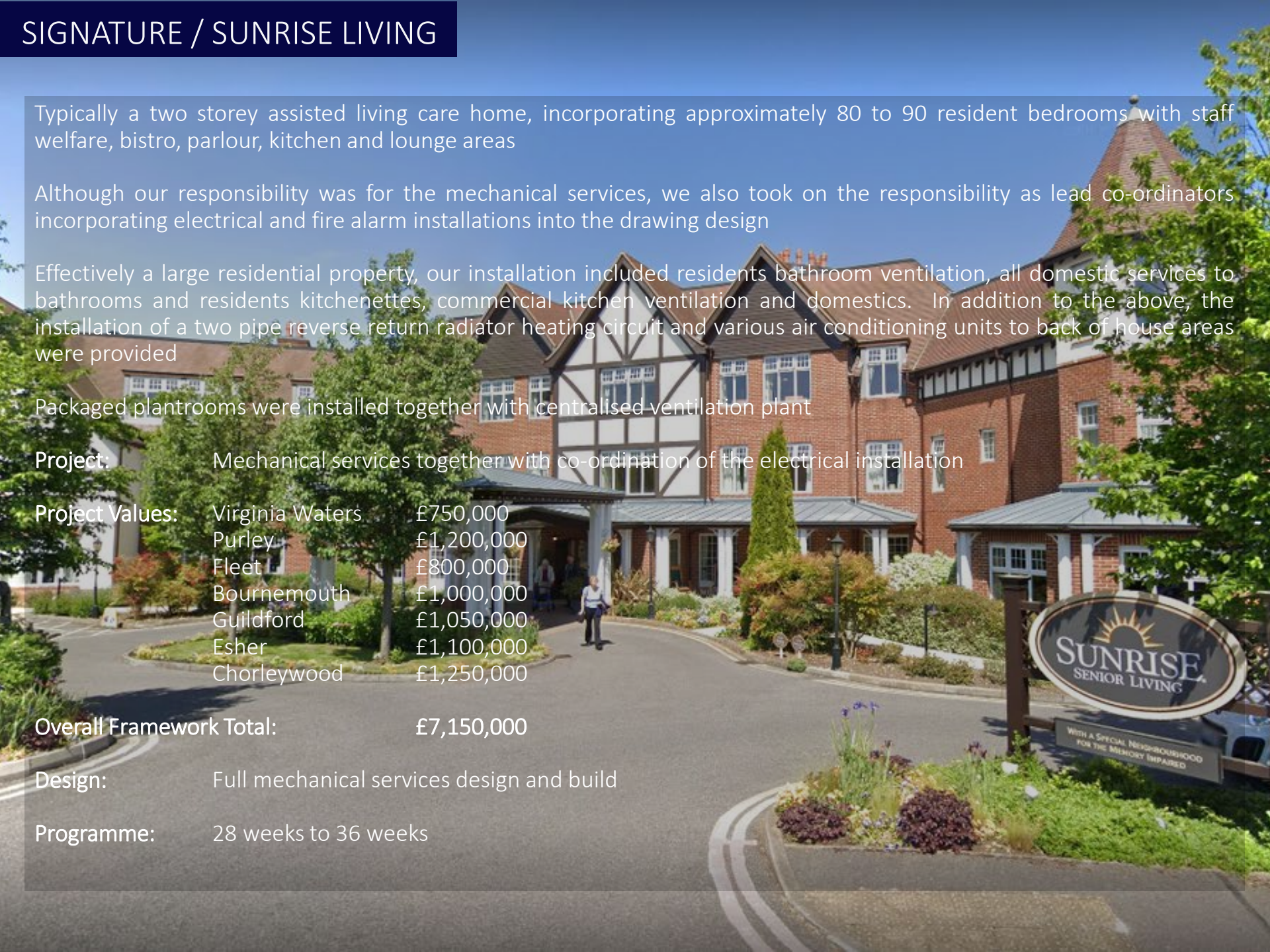
Project: Mechanical services together with co-ordination of the electrical installation

Project Values:	Virginia Waters	£750,000
	Purley	£1,200,000
	Fleet	£800,000
	Bournemouth	£1,000,000
	Guildford	£1,050,000
	Esher	£1,100,000
	Chorleywood	£1,250,000

Overall Framework Total: £7,150,000

Design: Full mechanical services design and build

Programme: 28 weeks to 36 weeks



SHAW HEALTHCARE
10no Properties Total Value: £5,426,000



We have completed ten new build assisted living nursing homes. These 2-3 storey buildings vary in size from 60 to 90 bedrooms with various ancillary rooms. The homes are of timber frame construction with tiled roofs. With the priority to have concealed services, the heating and domestic pipework throughout the building has been installed through the timber frame using speedfit pipework, with soil and vent pipework concealed within purpose made boxings

Project: Mechanical services together with co-ordination of the electrical installation

Project Values:	Deerswood, Crawley	£670,000
	Forest View, Burgess Hill	£480,000
	Elizabeth House, Bognor	£475,000
	Mill River Lodge, Horsham	£695,000
	Pulborough	£480,000
	Burleys Wood, Crawley	£540,000
	Littlecote, Petworth	£555,000
	Southlands, Shoreham-by-Sea	£490,000
	Yapton	£467,000
	Steyning	£574,000

Overall Framework Total: £5,426,000

Design: Full mechanical services design and build

Programme: 29 to 32 weeks

STAG HOUSE, EDGEWARE, LONDON

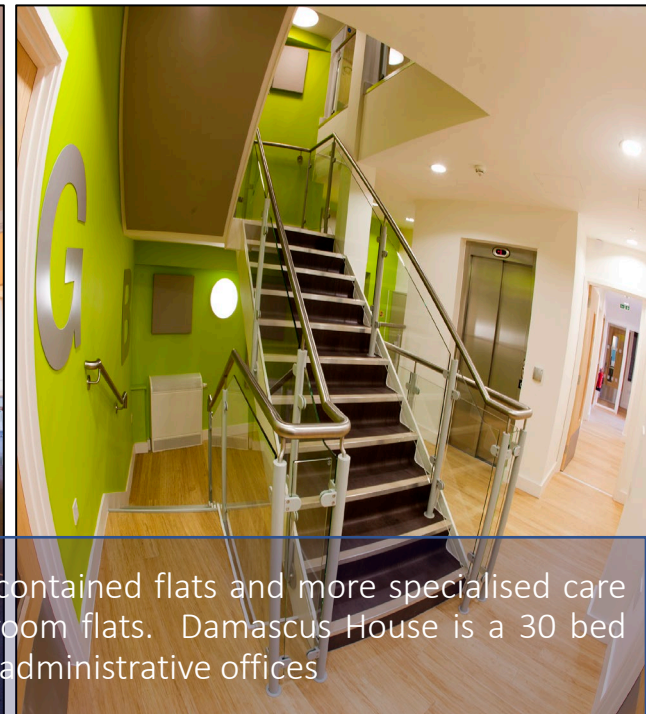
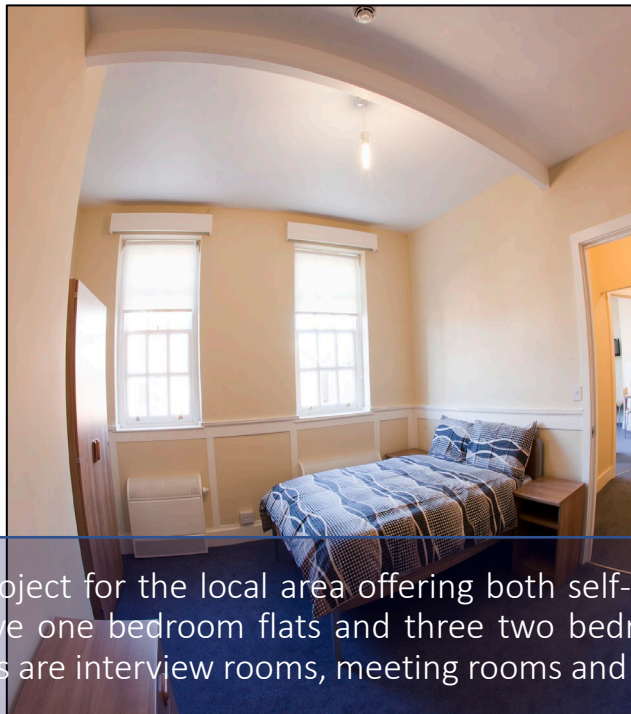
Project Value: £2,223,078



A 52-bedroom assisted living care facility. We completed the design and build for the mechanical services, air conditioning, ventilation, hot water generation, above ground drainage, underfloor heating, electrically; power, lighting, emergency lighting, fire security systems including a nurse/warden call system

DAMASCUS HOUSE & EMMAUS HOUSE, SALISBURY

Project Value: £885,999



This development is an assisted living project for the local area offering both self-contained flats and more specialised care rooms. Emmaus House comprises of five one bedroom flats and three two bedroom flats. Damascus House is a 30 bed hostel. The ground floor of both buildings are interview rooms, meeting rooms and administrative offices

PLACE COURT, ALDERSHOT
Project Value: £940,000



The project was a new build having 42 warden assisted apartments for the frail and elderly. The design of the building was set out as individual apartments with lounges, kitchens and separate bathrooms to afford the elderly a form of independence, whilst having communal areas on the ground floor level and 24 hour on call nursing care facilities

JACK'S PLACE, NAOMI HOUSE, SUTTON SCOTNEY

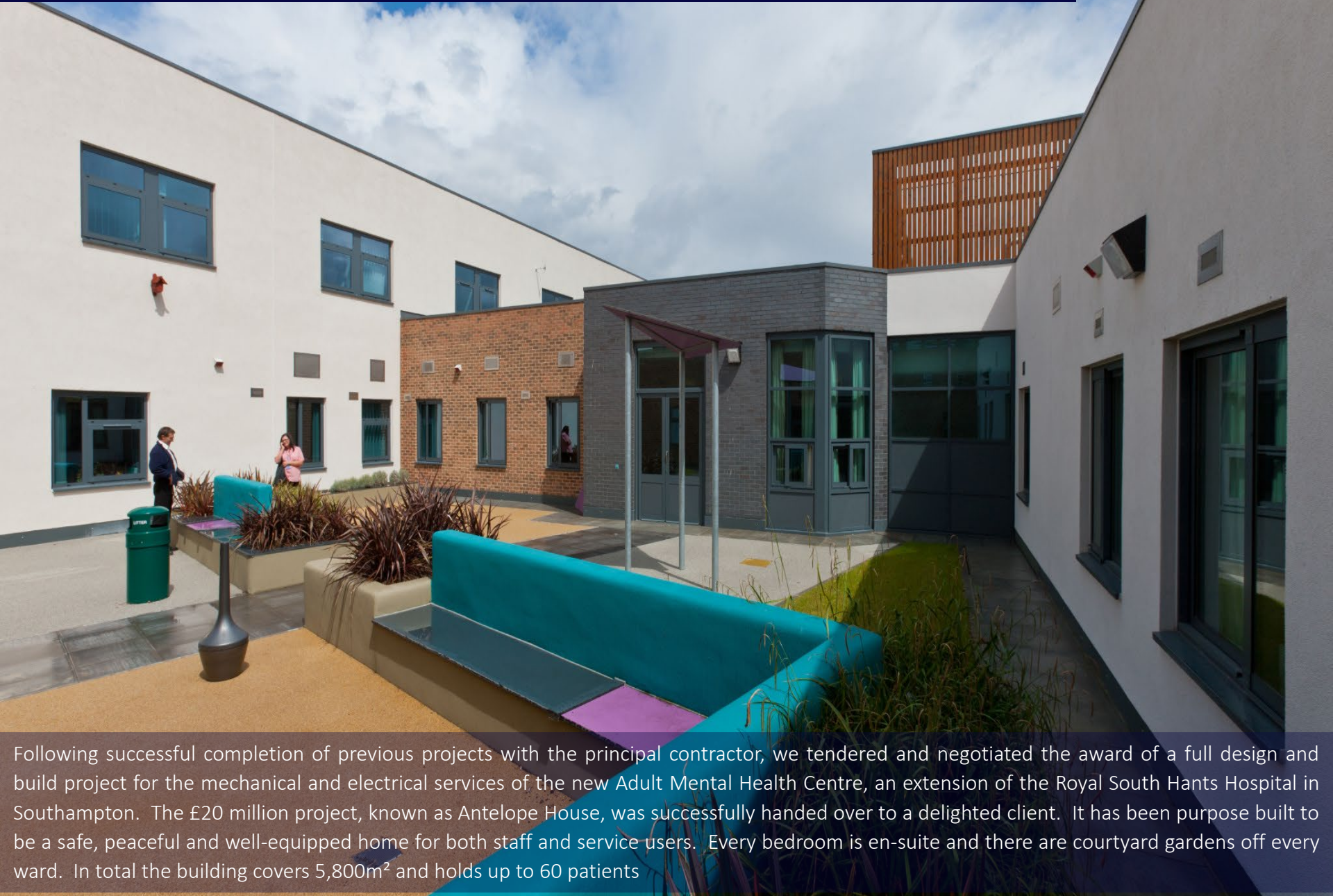
Project Value: £781,000



Naomi House is a two storey hospice designated for children and surrounding communities comprising of public health, ventilation, controls and heating systems. The contract was to design, build and commission mechanical piped and ductwork services to include heating, air conditioning, ventilation and domestic hot and cold water services for Jack's Place – a new young people's hospice

ANTELOPE HOUSE, ROYAL SOUTH HANTS HOSPITAL, SOUTHAMPTON

Project Value: £4,260,000



Following successful completion of previous projects with the principal contractor, we tendered and negotiated the award of a full design and build project for the mechanical and electrical services of the new Adult Mental Health Centre, an extension of the Royal South Hants Hospital in Southampton. The £20 million project, known as Antelope House, was successfully handed over to a delighted client. It has been purpose built to be a safe, peaceful and well-equipped home for both staff and service users. Every bedroom is en-suite and there are courtyard gardens off every ward. In total the building covers 5,800m² and holds up to 60 patients

WOODHAVEN, TOTTON, SOUTHAMPTON

Project Value: £1,100,000



This building provides a comforting holistic environment for adult patients to receive treatment and therapy for acute mental health support. The architectural form optimises the penetration of sunlight to all activity areas producing a range of views onto the surrounding landscape and courtyards. A double height foyer provides a dynamic and stimulating setting for the communal dining and recreational activities. Building services installation comprise of: LPHW heating services, gas installation and testing, chilled water services, mechanical supply and extract ventilation, installation of sanitaryware, plumbing services, hot water distribution systems, boosted cold water mains, public health services, BMS controls and wiring, nurse call services, lighting and power services, emergency lighting, mains power distribution, fire alarm services

OUR
MEP Co.