



LOCAL AUTH ORITY

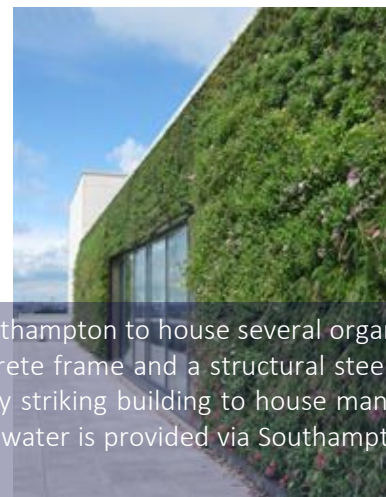
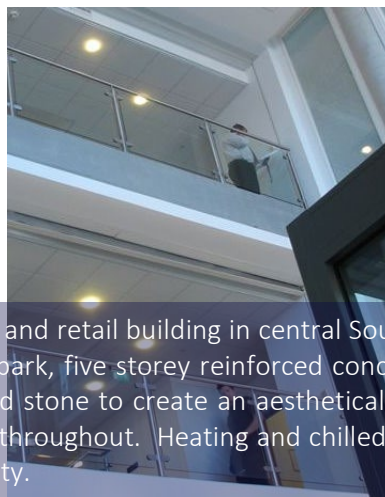
From Community Hubs, Housing Associations, Ministry of Justice facilities, and Regional Business Centres





SOUTHAMPTON REGIONAL BUSINESS CENTRE

Project Value: £3,140,000



Design and Build of a six storey, 92,000 ft² mixed use office and retail building in central Southampton to house several organisations including Southampton City Council. The building consists of an underground car park, five storey reinforced concrete frame and a structural steel sixth storey and roof area. The structure is clad with high specification glazing and Portland stone to create an aesthetically striking building to house many of the Council's facilities. The finishes are to a very high standard, with grade A materials throughout. Heating and chilled water is provided via Southampton City Council's district heating and cooling main fed from the city's geothermal power facility.

TIME SQUARE, BRACKNELL

Project Value: £2,010,699



The refurbishment of a five storey building and separate single storey office for a Local Authority. The works were carried out in multiple phases, ten phases for the main office building and one phase for the separate building

SWAYTHLING HOUSING ASSOCIATION HEADQUARTERS, EASTLEIGH

Project Value: £850,000



A prestigious three storey headquarters for Swaythling Housing Association and new services stores building for the client's mobile service engineers. The focus on the building was acoustic control due to the building being located adjacent to Southampton International Airport and directly below the flight path. Attention was given to noise in-break via external plant and services and required detailed acoustic testing on completion to satisfy that transfer of external noise through services and plant achieved the limitations within the employer's requirements

SWAYTHLING HOUSING ASSOCIATION



JOB CENTRE PLUS, BOURNEMOUTH

Project Value: £1,400,000



The flagship Job Centre Plus project for the Department of Work and Pensions. This project was pre-designed by WSP Consulting Engineers with whom we worked closely throughout the development to enhance the building services

BUILDINGS 2000 & 3000 – LAKESIDE, NORTH HARBOUR, PORTSMOUTH

Project Value: £2,005,000



Design and build refurbishment project for the mechanical and electrical services installation. The project was the iconic IBM offices at Lakeside North Harbour, in Building 2000 and 3000 and the Reception Building



MAIDSTONE INNOVATION CENTRE, MAIDSTONE

Project Value: £2,085,000



The Maidstone Innovation Centre is a new facility aspiring to be the county's first Academic, Health and Science Centre focused environment. Located on the Kent Medical Campus, part of the North Kent Enterprise Zone, the Innovation Centre brings together businesses and organisations involved in finding solutions to complex healthcare issues and scientific research and development.



SOMERSTOWN COMMUNITY HUB, PORTSMOUTH

Project Value: £2,484,027



The building comprised of a two-storey Hub which includes a Community Centre, a Youth Centre, a Primary Care Trust and Dental Surgery and a Local Housing Office and is built across Winston Churchill Avenue. The Community Centre has a number of function rooms, a sports hall and a curved fully glazed double height community lounge at its centre. The installation consisted of new incoming services, gas fired LTHW, VRF cooling, ventilation, BMS, air handling units, syphonic rainwater system, power, lighting, fire alarm, security, data and access systems



DORSET EMERGENCY SERVICES, POOLE

Project Value: £5,468,000



A new joint emergency services building built in the centre of Poole, Dorset. This facility was provided as part of a PFI project to reorganise police and fire emergency services in Dorset. This signature building incorporates a new police station, a high security custody suite, police and fire commissioned centres and a major incident suite

THE NATIONAL ARCHIVES, LONDON

Project Value: £191,309



Replacement of two chillers serving the archive vaults at the National Archives. The existing main chillers were lifted off and replaced with two new units, including valves and pipework and connections to the main buffer tank. Upon completion of the installation the chillers were re-commissioned as run and standby, and water treatment applied to the system.



JOHN POUNDS CENTRE, PORTSMOUTH

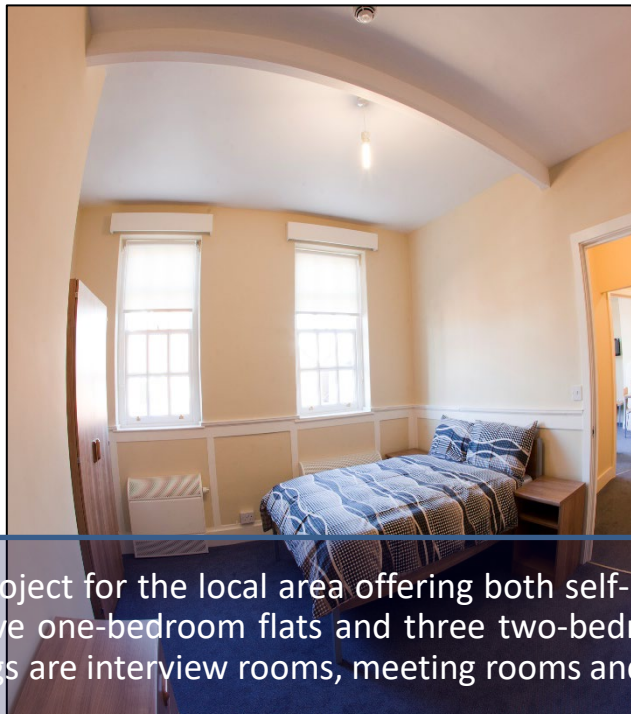
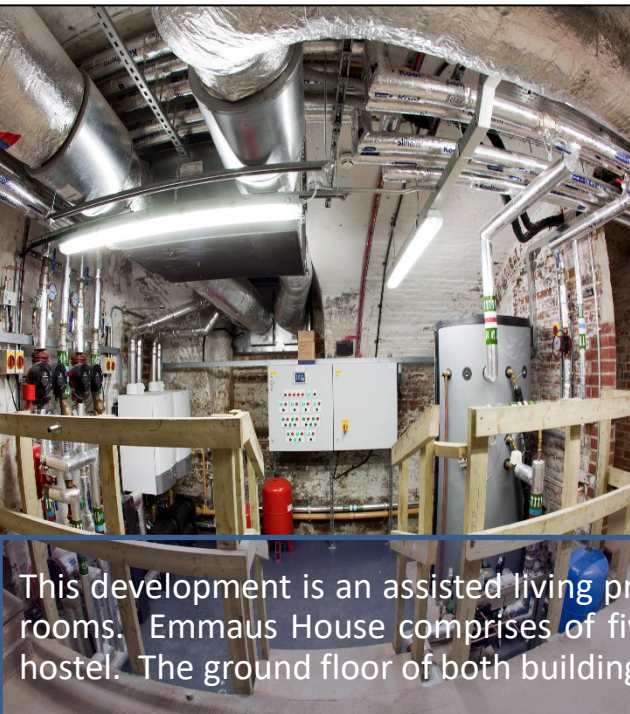
Project Value: £1,460,000



John Pounds Centre was designed to provide the local community with a facility to cater for health, leisure, small business support, childcare and education for Portsmouth City Council. We undertook the design and installation of all of the mechanical, electrical and specialist installations including public address, audibility control for the hard of hearing, lighting control, heating, cooling, ventilation and automatic controls. Full mechanical and electrical installation to a multi-use community centre incorporating sports halls (to Sport England Standard), local business hubs, crèche, gymnasium, teaching spaces, library and youth centre

DAMASCUS HOUSE & EMMAUS HOUSE, SALISBURY

Project Value: £885,999



This development is an assisted living project for the local area offering both self-contained flats and more specialised care rooms. Emmaus House comprises of five one-bedroom flats and three two-bedroom flats. Damascus House is a 30-bed hostel. The ground floor of both buildings are interview rooms, meeting rooms and administrative offices

JOINT COMMUNICATION CENTRE – NETLEY AND DEVIZES

Project Value: Devizes: £433,310 Netley: £430,000



Two new build joint command centres for the Wiltshire and Hampshire Fire and Rescue, Ambulance and Police Services. These were design and build mechanical services projects. The projects had strict noise restrictions and for that reason the chilled water plant had to be sited within an internal plant area. All plant was sized and selected for reliability to run 24/7, together with duty/standby systems for critical areas and dual fuel boilers.

HMS RALEIGH, TORPOINT, CORNWALL

Project Value: £1,600,000



This is a Ministry of Defence (MoD) site, the contract involved the construction of a 'heavy replenishment at sea' (HRAS) proving and simulation facility. Originally ship-to-ship transfers of fuel oil and stores containers had a maximum weight limit of two tonnes (RAS), the HRAS took this limit up to six tonnes. NATO and US warships are being constructed to use the new six tonne HRAS, but the HMS Raleigh facility will be the proving ground for this. The installation will be used for two years as a proving facility and then for the training of Royal Naval personnel. The site incorporates a motion simulator, operated hydraulically, which allows the simulation of various sea states, during simulation, electrical winch loads can vary from $\frac{3}{4}$ megawatt load to $\frac{1}{2}$ megawatt re-gen within an eight second cycle. To cope with these extremes a $1\frac{1}{2}$ megawatt generating facility is being provided with load banks to absorb the re-gen loads. We were responsible for the diversion of services across the site and the design and installation of mechanical, electrical, public health, fire protection, and hydraulic systems

WINCHESTER CROWN COURT – MINISTRY OF JUSTICE

Project Value: £632,250



Design and build; mechanical and electrical services plantroom refurbishment with external radiant panel heating modifications. The plantroom consisted of changing over the existing BMS equipment onto its own electrical supply and also migrating all Hampshire County Council supplies onto a separate electrical panel with new BMS, boilers, pumps, side stream filtration, gas meter, heat meters and associated pipework replacement and modifications

POOLE MAGISTRATES COURT – MINISTRY OF JUSTICE

Project Value: £126,864



This was a quick start design and build project, consisting of boiler, water heaters, controls, pumps and flue replacement within the working Court House. The project included safe removal of existing internal oil tanks and the installation of a new gas main

PLYMOUTH MAGISTRATES COURT – MINISTRY OF JUSTICE

Project Value: £95,000



Replace existing boilers and pumps and installation of a plate heat exchanger in an occupied Court House. The pipework was prefabricated and installed during a weekend shutdown, ensuring the system was fully operational on Monday morning. The works also included modification to the flues and control system

ROSE COURT – CROWN PROSECUTION SERVICE

Project Value: £260,000



2

ROSE COURT

2

This project was refurbishment and upgrade of the mechanical services over multiple floors of the Crown Prosecution Services head office in London whilst maintaining business as usual activities. Conducting and reporting on validation finds of existing services resulting in extensive modifications to existing air conditioning, VAV ventilation services and perimeter heating in line with the new proposed layout of the open plan office spaces

KENSINGTON TOWN HALL, ROYAL BOROUGH OF KENSINGTON AND CHELSEA

Project Value: £525,000



The project comprises of the remodelling and refurbishment of the third floor of Kensington Town Hall to provide new office accommodation, break out and toilet cores for Royal Borough of Kensington and Chelsea staff. This pre-designed project consists of the supply, installation, testing and commissioning of new LTHW, CHW and primary and secondary ventilation systems serving chilled beams. It also includes domestic and public health services in accordance with the specification and drawings

ANDOVER GUILDHALL

Project Value: £170,000



This project was to design, supply and installation of new and refurbished mechanical, electrical and fabric services to the Mayor's chambers and meeting rooms in Andover Guildhall

HIS MAJESTY'S PRISON, CHANNINGS WOOD, DEVON

Project Value: £1,308,000



This project comprised of the removal of the existing steam and MTHW generation plant, together with the associated controls and pipework. 3 no steam generators and packaged hot well with steam/MTHW and MTHW/HWS plate heat exchangers installed in the existing redundant plants place. A new Trend control system was installed to control the new plant with associated controls and electrical wiring. New steam and condensate pipework were installed to serve all of the laundry equipment. The existing biomass boiler and silo has been removed. A new 195kW boiler and enlarged silo has been installed in its place together with its own control system. Modifications has been made to the chipper and wood feed systems

HIS MAJESTY'S PRISON, COLDINGLEY, WOKING

Project Value: £2,091,563



HMP Coldingley was opened in 1969, as a Category B Training Prison. In 1993 it was re-designated as a Category C training Prison and is focused on resettling prisoners. The prison is located in Woking and serves the Surrey population.

A complete refurbishment of HMP Coldingley's heating systems has been carried out, including the supply and installation of new heat emitters and associated plantroom equipment. The project also consists of a site-wide new electrical ring main feeding the entire Prison ground.

HIS MAJESTY'S PRISON, WOODHILL, MILTON KEYNES

Project Value: £380,937



HMP Woodhill was opened in 1992. It is a core local establishment serving Courts across the Thames Valley Region and Northamptonshire. The project was an HSB5 – tanking and floor replacement. The project consisted of removing the existing screed, installing a new tanking membrane, new screed and vinyl flooring. An investigation was carried out to the drainage system within the house block and remedial work completed

MOD BOSCOMBE DOWN, PHASE 1 AND 2

Project Value: £408,000



Redevelopment of an existing hardened aircraft shelter originally built during the cold war period. Installation of a new low temperature hot water system consisting of an oil powered boiler feeding eight fan heaters. Installation of a new lighting power and fire alarm system, including strip out of the existing services. These projects were completed on time, snag free, within budget and accredited with 'Perfect Delivery' status

GEM (GOVERNMENT ESTATE MANAGEMENT) LABS, REGENT STREET BARRACKS

Project Value: £221,773

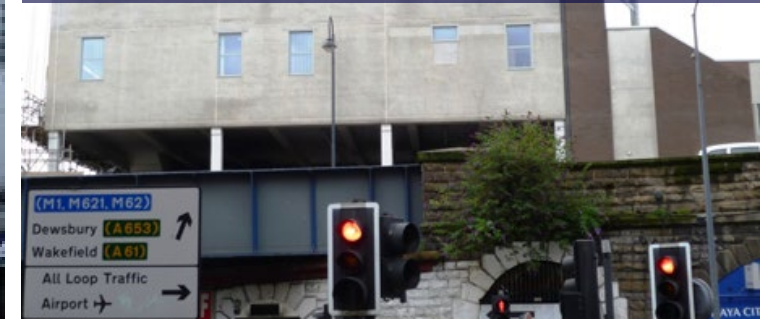


Working with the main contractor and consultant, we took over the contract two weeks into the build programme, following the collapse of the original contractor, using the workforce on site we completed the installation of a suite of class seven Laboratories. The works involved the full mechanical and bespoke controls system to the Labs, consisting of the air handling unit, all pressure rated supply and extract ductwork, heat pump chiller and bespoke trend controls system. Upon completion, we carried out full commissioning via a specialist contractor to demonstrate and certify the Labs BS/EN Class 7 Standard



RAILTRACK, LEEDS

Project Value: £522,000



Located at Leeds Central Station and comprised an existing office building which was converted into offices for British Transport Police. Air conditioning to classrooms, LPHW heating services, gas installation/boiler plantroom, mechanical supply and extract ventilation, installation of sanitaryware, plumbing services, hot water distribution systems, boosted cold water mains, public health services, BMS controls and wiring, panic alarms, door entry systems, CCTV installation, lighting and power services, mechanical services power supplies, emergency lighting, mains power distribution, fire alarm services, data containment system and lightning protection

NEW APPRENTICE TRAINING CENTRES FOR BRITISH GAS

Project Value: £830,000



British Gas

Looking after your world



The conversion of an existing warehouse building into a new apprenticeship training village for British Gas. This included mechanical services to mock training bays, staff accommodation, training classroom, conference centre with kitchen and canteen facilities and solar energy recovery rooms

OUR
MEP Co.